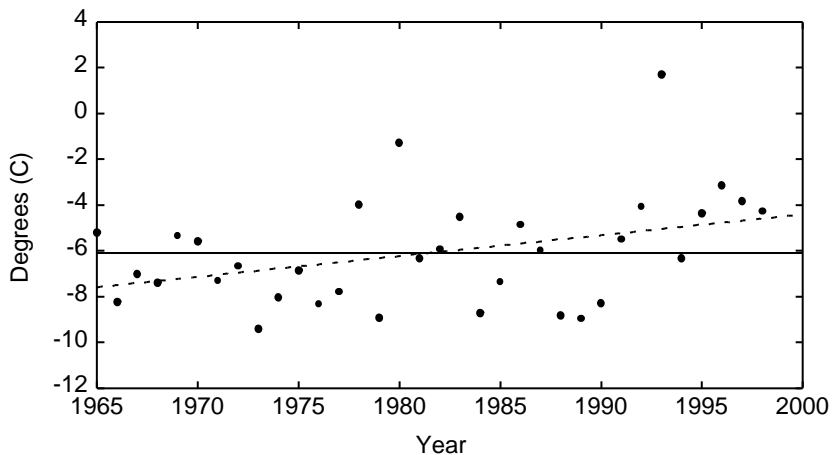
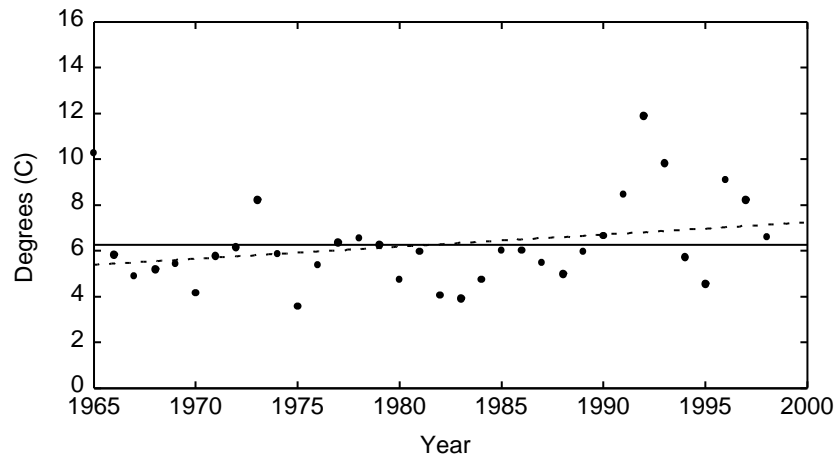


Trends in Seasonal Minimum Temperatures, Needles, 1965-1998

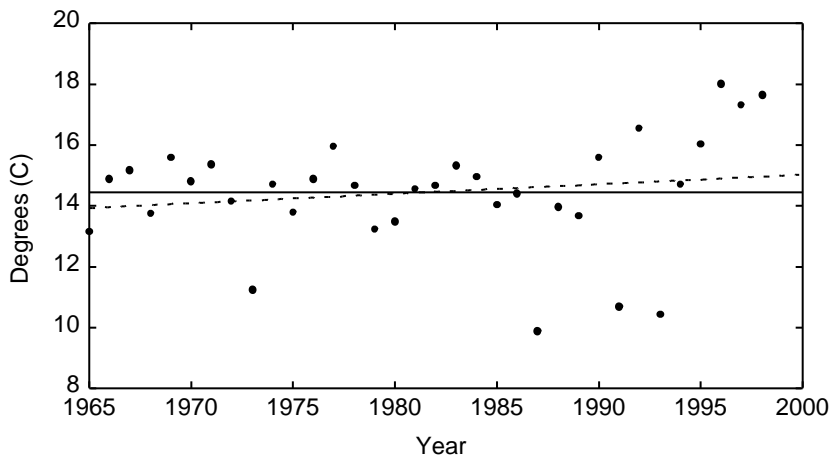
Average Daily Minimum Temperature During Winter
(solid line = average; dashed line = trend)



Average Minimum Daily Temperature During Spring
(solid line = average; dashed line = trend)



Average Minimum Daily Temperature During Summer
(solid line = average; dashed line = trend)



Average Minimum Daily Temperature During Autumn
(solid line = average; dashed line = trend)

